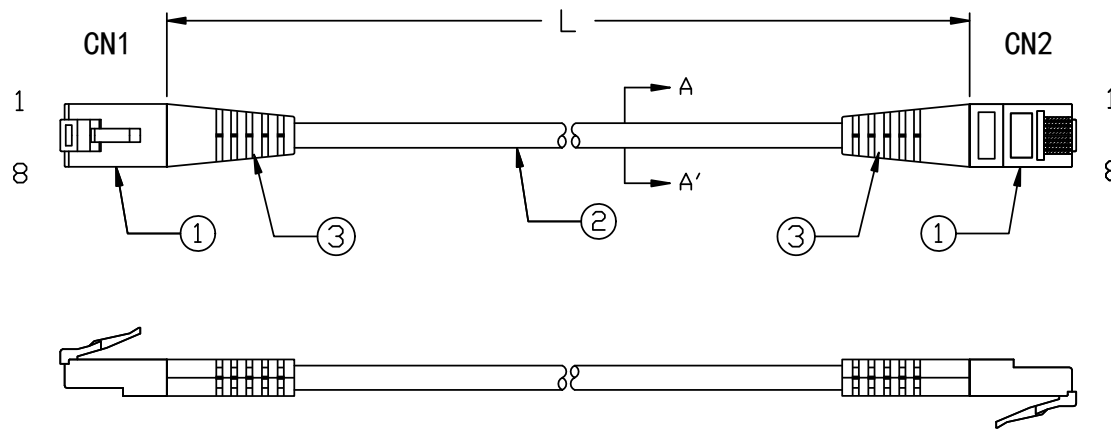
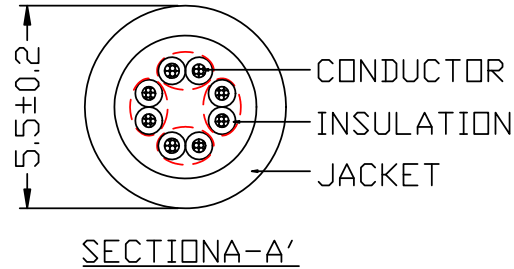


Unit: MM

- 1. WHITE&ORANGE
- 2. ORANGE
- 3. WHITE&GREEN
- 4. BLUE
- 5. WHITE&BLUE
- 6. GREEN
- 7. WHITE&BROWN
- 8. BROWN



- 1. WHITE&ORANGE
- 2. ORANGE
- 3. WHITE&GREEN
- 4. BLUE
- 5. WHITE&BLUE
- 6. GREEN
- 7. WHITE&BROWN
- 8. BROWN



NOTES:

- 1. PLUG: 8P8C PLUG GOLD PLATED 3u" 2PCS
- 2. WIRE: CAT.5e UTP 24AWG(7/0.20BS)*4P
 OD: 5.5±0.2mm PVC JACKET: BLACK
- 3. SR: PVC 60P BLACK

Connection table

FROM	WIRE COLOR	TO
CN1-1	WHITE&ORANGE	CN2-1
CN1-2	ORANGE	CN2-2
CN1-3	WHITE&GREEN	CN2-3
CN1-4	BLUE	CN2-4
CN1-5	WHITE&BLUE	CN2-5
CN1-6	GREEN	CN2-6
CN1-7	WHITE&BROWN	CN2-7
CN1-8	BROWN	CN2-8



综乙实业有限公司
 CHUNG YI ENTERPRISE CO., LTD
 ISO-9001
 ISO-14001

Customer	CHUNG YI	Authorized By		第 共 一 一 页 页
P/N #		Approved By		
Model No.	CAT.5e UTP PATCH CORD	Drawing By		